

# EDR: The Standard of Accuracy in Environmental Risk Information

**Order with ease via the web any time of the day or night.**  
Nationwide customer service available between 8 am and 8 pm EST.  
**800-352-0050 | [www.edrnet.com](http://www.edrnet.com)**

Environmental Data Resources Inc. (EDR) is a national provider of environmental risk management information. EDR is headquartered in Connecticut with regional offices located throughout the United States. EDR is wholly owned by DMG Information, Inc., the business information division of Daily Mail and General Trust, plc (DMGT). For more information, visit [www.edrnet.com](http://www.edrnet.com).

**No matter what type of project you're working on, EDR's superior environmental risk information reports uncover the information you need faster and easier than you ever thought possible. Uses include:**

- Railway Corridors
- Mass Transit Studies
- Intersection Improvements
- Right-Of-Way and Road Widening Projects
- Bridge and Tunnel Repairs and Replacements
- Highway On and Off Ramps
- Turning Lanes
- Drainage and Dam Projects
- Power Lines
- Light Schemes
- Oil and Gas Pipelines
- Sewers
- Communication Evaluations
- NEPA Compliance
- Forestland and Rural Property Evaluation
- Vulnerability Assessments
- And More!

**Environmental Data Resources Inc.**  
The Standard in Environmental Risk Information  
3530 Post Road, Southport, CT 06890  
800-352-0050, Fax 800-231-6802  
[www.edrnet.com](http://www.edrnet.com)

©2003 Environmental Data Resources Inc. All Rights Reserved.  
Trademarks are the property of Environmental Data Resources Inc. or its affiliates.  
Printed in U.S.A. on recycled papers.

**When You Need Quality  
Environmental Information Mapping,  
You Need A Legend**

**Environmental Data Resources Inc.**  
Accurate. Comprehensive. Responsive.

## For The Most Accurate Environmental Risk Data Trust EDR®

### Information You Need From A Source You Can Trust

Funding in support of infrastructure projects will create significant opportunities for consultants and contractors. Likewise, the recent attention that's being placed on vulnerability assessments is creating a heightened need for environmental information.

Whether for infrastructure projects or vulnerability assessments, environmental data is a significant portion of due diligence. Accurate, up-to-date environmental risk information and mapping capabilities play an essential role in fulfilling these environmental assessments. *Do you have the right environmental data to be successful?*

Why not look to "the legend," Environmental Data Resources Inc. (EDR)? EDR is a nationally known firm with a reputation for the most precise current and historical environmental risk information. EDR also offers timesaving online services. That's why environmental professionals, engineers, government agencies, and corporations trust EDR for state-of-the-art information and mapping technology. Environmental Data Resources... environmental risk information you can count on!



### What To Look For From the Legend

**A full range of highly detailed reports and maps**

**Constantly updated databases and reports** for more data and greater coverage with higher accuracy

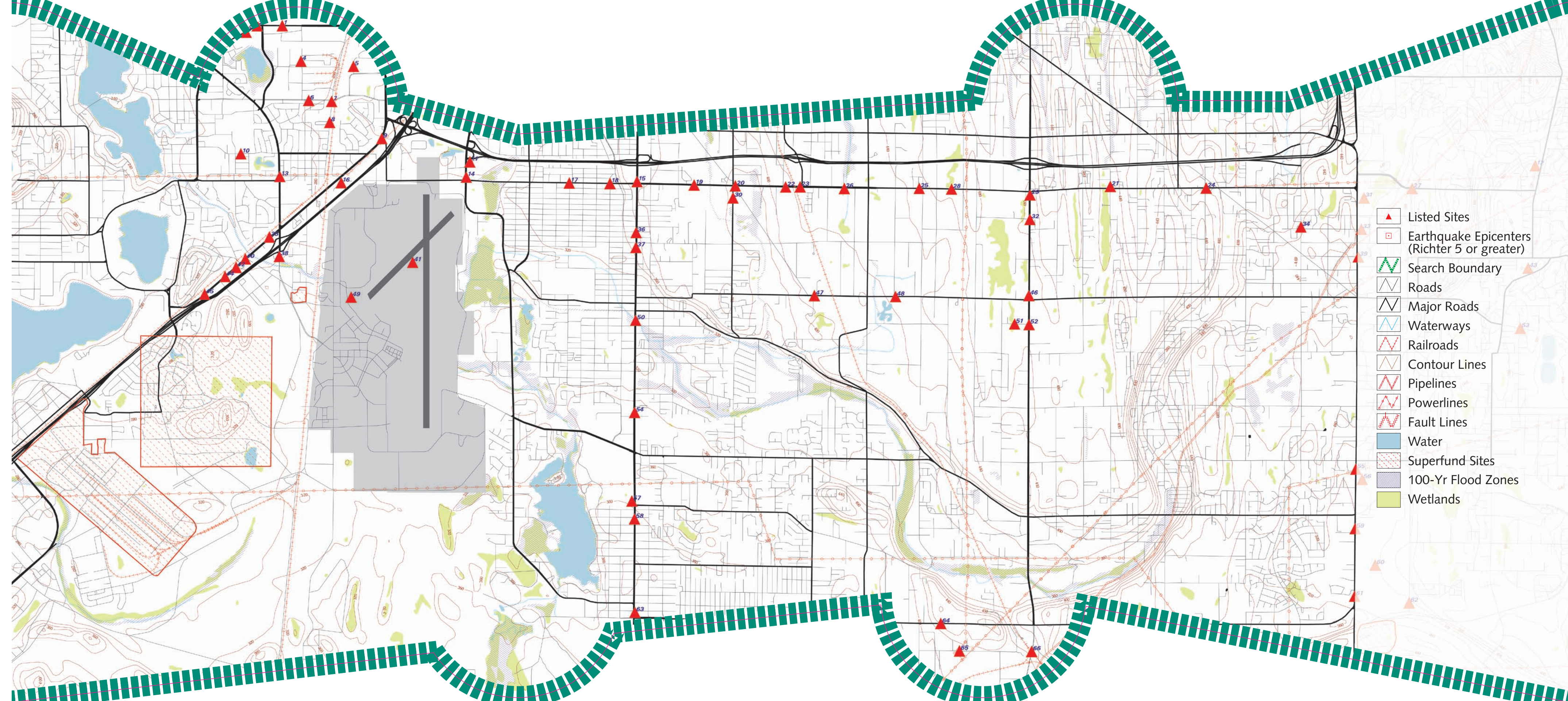
**Environmental information that exceeds ASTM and NEPA requirements**

**Historical reports dating back to the 1800s** including over 1.2 million Sanborn® Maps, Fire Insurance Map Abstracts, Aerial Photos, City Directory Abstracts and Historical Topographic Map reports

**Customized reports** – radius, irregularly shaped site, or a specific geographic corridor or area

**One source versus time-consuming research** in city halls, state and federal government agencies, and libraries

**Searches include federal, state and local databases**



- ▲ Listed Sites
- Earthquake Epicenters (Richter 5 or greater)
- Search Boundary
- ▬ Roads
- ▬ Major Roads
- ▬ Waterways
- ▬ Railroads
- ▬ Contour Lines
- ▬ Pipelines
- ▬ Powerlines
- ▬ Fault Lines
- ▬ Water
- ▬ Superfund Sites
- ▬ 100-Yr Flood Zones
- ▬ Wetlands

## Reports Customized to Your Needs

EDR offers a variety of reports covering a single site or an entire geographic area.

**EDR Area Studies & Corridor Studies** – allow you to provide custom specifications for a specific geographic corridor or area. Federal and state environmental records from our nationwide databases are searched and plotted providing detailed and accurate information.

**EDR NEPACheck®** – determines whether a site will have the potential to cause environmental impact, as defined by NEPA (National Environmental Policy Act). The report includes five color maps: Natural Areas, Historic Sites, Flood Plains, Wetlands, and FCC & FAA.

**EDR Radius Map Report** – this map-based report identifies sites with real or potential environmental issues. Environmental databases are searched within a radius as defined by ASTM E 1527 or tailored to your

**EDR's ASTM 2000 Packages** – help you more easily and cost-effectively comply with the requirements of the ASTM E 1527 standard. All EDR ASTM 2000 Packages include ASTM & proprietary databases, geologic and hydrogeologic information, and historical information.

### Designed to Get the Job Done

With EDR's world-class customer service you get the reports you need fast. Easy to read and well-organized, EDR reports can be adapted to your presentation format and come with full text detail. Maps are available in a variety of sizes including wall maps or atlas formats.



specifications. Features include: sensitive receptors, waterways and major roads, wetlands data, NPL site boundaries, Department of Defense boundaries, coal gas sites, oil and gas lines, electric power lines, 100 and 500-year flood zones and Brownfield's data.

**EDR Offsite Receptor Report™** – provides information to evaluate worst-case accidental chemical release scenarios, such as those required in risk management plans under the Clean Air Act. Newly enhanced coverage of sensitive sites (daycare centers, schools, hospitals, etc.) includes over 90,000 new sites.

**EDR GeoCheck® Report** – a hydrogeologic report containing data to help determine the direction and velocity of contaminant migration. Available as a stand-alone report or as part of an EDR Radius Map Report.

### Fast Electronic or Hard Copy Delivery

EDR reports are available via electronic delivery or hard copy delivered to your desk. You can purchase an individual report or one of the conveniently bundled packages of reports.

### Ordering Reports Is Easy

Go online to learn more about new reports, enhancements and functions or to obtain samples. Order with ease via the web any time of the day or night. Feel free to call one of our account executives at **800-352-0050** between the hours of 8 am and 8 pm EST.